

Nyisztor Studio

391 Canning Hwy, Melville
Western Australia

6-21st April 2024

Opening Saturday 6 April, 6.00pm

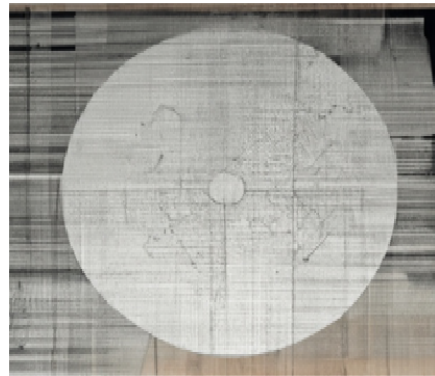
two compelling exhibitions

Non-linear Time: Landscape and the Body | Jane Whelan

The AI Machine | Monika Lukowska • Sarah Robinson



Jane Whelan, *Cliff-Space*, 2024, charcoal on BFK Rives, 76 x 56 cm



Sarah Robinson, *Communication with AI*, 2023, AI, digital, paper lithography, Awagami paper, 30 x 20 cm

Western Australian artists Jane Whelan and, Monika Lukowska • Sarah Robinson bring these two contemporary art experiences together at Nyisztor Studio. These separate exhibitions bridge digital and physical experiences to touch on the central notion of what it means to experience the world and be a creative.

In *Non-linear Time: Landscape and the Body*, Whelan turns to the past, exploring the implications of non-linear time that emerge through memory. Memories lie in the past but remain present within the self; with memory time loses its chronological certainty. Whelan explores through drawing how this intersection between times might add to our response to the landscape formed through our participation with not only the physical experience of it as it is in the present but also its embedded personal and cultural stories. In looking toward the future, Lukowska and Robinson explore the emerging potential of AI and its significance in expanding technologies' impact on image-making. They initiate a conversation with AI through their printmaking practices including woodcut, lithography and etching. Previously showcased in Melbourne at the Printmaking Council of Australia's Gallery, the *The AI Machine* investigates a timely question of impact and reliance on AI and its role within Visual Arts.